



Comprendre le monde,
construire l'avenir®

Modifications

Date	Version	Auteur	Notes
03/01/2014	1.0	DI/ISAC	Création

Table des matières

<u>OU TROUVER LES DISTRIBUTIONS ?</u>	4
<u>VERIFICATION D'ACCES AU SERVEUR DE SAUVEGARDE</u>	4
<u>INSTALLATION D'UN AGENT POUR LINUX (32 ET 64 BITS)</u>	4
PROCEDURE D'INSTALLATION	4
REALISER ENSUITE LES ACTIONS DE POST-INSTALLATION.	8
<u>INSTALLATION D'UN AGENT UNIX (TOUS PROCESSEURS) AUTRE QUE LINUX</u>	8
PROCEDURE D'INSTALLATION	8
REALISER ENSUITE LES ACTIONS DE POST-INSTALLATION.	19
<u>ACTIONS POST-INSTALLATION DU CLIENT</u>	19
CREER UN SOUS-CLIENT POUR LE CLIENT.....	19
<u>DEMARRAGE/ARRET DES SERVICES CALYPSO (LINUX/UNIX)</u>	23
DEMARRER LES SERVICES	23
ARRETER MES SERVICES	23
VERIFIER LE STATUS.....	23
LISTER LES SERVICES CALYPSO	24
<u>DE-INSTALLER CALYPSO</u>	24
AVEC LES OUTILS CALYPSO	24
A LA MAIN.....	24

Où trouver les distributions ?

Téléchargez le logiciel à l'adresse suivante :

<http://www.di.u-psud.fr/telechargement/outils/CALYPSO>

Vous y trouverez :

- calypso_linux.tgz : qui contient les agents linux 32 et 64 bits. C'est un programme d'installation pré-packagé pour les serveurs Linux.
- calypso_linux_unix_complet.iso : qui contient tous les agents (linux, aix, solaris....) (gros package)

Vérification d'accès au serveur de sauvegarde

Avant d'installer le logiciel, vous devez vérifier que les ports : 8400, 8401, 8402 et 8403 sont accessibles depuis votre machine en utilisant la commande. Ex :

```
telnet backup1.save.u-psud.fr 8400
```

Pour sortir taper <CTRL> \$ puis la commande QUIT

La DI effectue l'ouverture des flux de son côté. Cependant, selon les configurations, il peut également y avoir des mécanismes de filtrages à paramétrer du côté des labos/services.

Installation d'un agent pour Linux (32 et 64 bits)

Procédure d'installation

Télécharger et « dé-tarer » l'installation cliente :

```
cd /tmp
wget http://www.di.u-psud.fr/telechargement/outils/CALYPSO/calypso_linux.tgz
tar -xzf calypso_linux.tgz
cd pkg
```

Les questions qui vous seront posées lors de l'installation seront :

- Les emplacements d'installation
- Client Computer Group Name : cette information doit vous être fournie par la DI

Lancer cvpkgadd et le client s'installera selon l'architecture de votre machine (32 ou 64 bits) :

```
./cvpkgadd
```

```
Preparing and updating installer ...
Using installer version 10116062.
Assigning setup GUID ... 10-116-webapplis1.di.u-psud.fr-129.175.124.194-23092
```

Welcome to Unix Installer ... Bull Calypso 10 (BUILD116)

BULL SAS SOFTWARE LICENSE AGREEMENT

(THIS IS A LICENSE AND NOT A SALE)
IMPORTANT - READ CAREFULLY BEFORE INSTALLING SOFTWARE

Bull StoreWay(r) Calypso Release V10

(including Microsoft(r) SQL Server(tm) 2008 Enterprise Edition,
SQL Server(tm) 2008 Express Edition and
Windows Pre-Installation Environment)

THIS SOFTWARE LICENSE AGREEMENT (THE "AGREEMENT") IS A LEGAL
AGREEMENT BETWEEN BULL SAS AND THE CUSTOMER OF THE SOFTWARE.
BY

CLICKING THE "YES" BOX OR BY DOWNLOADING, INSTALLING, COPYING OR
OTHERWISE USING THE SOFTWARE, YOU REPRESENT THAT YOU HAVE BEEN
AUTHORIZED TO ACCEPT THESE TERMS ON BEHALF OF THE CUSTOMER (THE
ENTITY ON WHOSE BEHALF YOU REPRESENT YOU ARE AUTHORIZED TO ACT,
IN WHICH EVENT "YOU" AND "YOUR" SHALL REFER TO YOU AND SUCH ENTI-
TY, AS THE CASE MAY BE). YOU MAY USE THE SOFTWARE ONLY IN ACCOR-
DANCE WITH THIS LICENSE AGREEMENT (UNLESS YOU HAVE A SIGNED LI-
CENSE AGREEMENT WITH BULL SAS).

IF YOU PURCHASED THE SOFTWARE FROM AN AUTHORIZED RESELLER OF
BULL

SAS, YOU UNDERSTAND THAT SUCH RESELLER IS NOT BULL SAS' AGENT AND
IS NOT AUTHORIZED TO MAKE ANY REPRESENTATIONS, CONDITIONS OR WAR-
RANTIES, STATUTORY OR OTHERWISE, ON BULL SAS' BEHALF NOR TO VARY
ANY OF THE TERMS OR CONDITIONS OF THIS AGREEMENT.

0. DEFINITIONS.

"Documentation" means the publications prepared and delivered to
You by Bull SAS that accompanies the Software, such as reference,
user, installation, systems administrator and technical guides.

"Software" means those items of software, in object code form on-
ly, proprietary to Bull SAS and/or its suppliers that You have
ordered from Bull SAS in the accompanying package or Your accept-
ed order(s) and supplied together with this Agreement and any
patch, update, modification or other enhancement thereto, when
and if available, provided to You by Bull SAS.

.
.
.

Patent Acknowledgment

This Software is covered by US Patent Numbers 5,559,991; 5,642,496; 6,418,478; 6,542,972; 6,658,436; 6,721,767; 6,760,723; 7,003,641; 7,035,880; 7,107,298; 7,130,970; 7,155,481; 7,162,496; 7,174,433; 7,209,972; 7,246,207; 7,277,941; 7,287,047; 7,315,923; 7,315,924; 7,343,356; 7,343,453; 7,343,459; 7,346,623; 7,346,751; 7,380,072; 7,389,311; 7,395,282; 7,401,154; 7,409,509; 7,434,219; 7,440,982; 7,447,692; 7,454,569; 7,457,790; 7,472,142; 7,472,238; 7,484,054; 7,490,207; 7,500,053; 7,529,782; 7,536,291; 7,539,707; 7,539,783; 7,543,125; 7,546,324; 7,568,080; 7,581,077; 7,584,227 and other patents and patents pending.

Do you accept the terms of this license agreement? [no] **yes**

Performing Pre-Setup Tasks

Selecting Unix Setup Task ... Install data protection agents on this computer

Setting Client/Physical Machine Host Name ... webapplis1.di.u-psud.fr

Setting Client Name ... webapplis1

Selecting Modules to Install ... done.

Deciding If to Install Agents for Restore Only ... no

Installing Module CVGxBase0 10(BUILD116)

Performing Pre-Install Tasks ...

Calypso <- request -> CVGxBase0 for Linux(x86_64) glibc2.5

Preparing Installation Directory

Please specify where you want us to install Calypso binaries.

It must be a local directory or NFS share and there should be at least 282MB of free space available. All files will be installed in a "calypso" subdirectory, so if you enter "/opt", the files will actually be placed into "/opt/calypso".

Installation Directory: [/opt] **/opt**

Calypso <- request -> CVGxBase0 for Linux(x86_64) glibc2.5

Preparing Log Directory

Please specify where you want to keep Calypso log files.

It must be a local directory or NFS share and there should be at least 100MB of free space available. All log files will be created in a "calypso/Log_Files" subdirectory, so if you enter "/var/log", the logs will actually be placed into "/var/log/calypso/Log_Files".

Log Directory: [/var/log] **/var/log**

Calypso <- request -> CVGxBase0 for Linux(x86_64) glibc2.5

Preparing Job Results Directory

Please specify the name for the JobResults directory.

It must be a local directory or NFS share and there should be at least 20MB of free space available. It will be used to store intermediate data that should be passed from one backup phase to another.

JobResults Directory: [/opt] **/opt**

Installation client Linux/Unix

Deciding If to Use a Unix Group ... no
Setting Access Permissions for Group and Other Users ... done.
Successfully copied and verified 276 files from updates and packages.
Performing Post-Install Tasks ...
Creating registry tree under /etc/CommVaultRegistry ... done.
Successfully installed CVGxBase0
Installing Module CVGxBase 10(BUILD116)
Setting Instance Port Number of cvd ... 8400
Setting Instance Port Number of EvMgrC ... 8402
Deciding If to Configure Firewall ... yes
Selecting Firewall Type ... This machine can open connection to CommServe on a tunnel port
Setting CommServe Client Name ... backup1
Setting CommServe Host Name ... backup1.save.u-psud.fr
Setting Port to Open Tunnel to CommServe ... 8403
Deciding If to Configure HTTP Proxy ... no
Specifying If CommServe Per-Client Certificate is Enabled ... no
Checking CommServe ... backup1.save.u-psud.fr
Reading data from CommServe Install Manager ... done.
Checking requirement on CommServe Install Manager ... done.
Performing Pre-Install Tasks ...
Selecting How to Set Commcell Level Global Filters ... Use Cell level policy

Calypso <- request -> CVGxBase for Linux(x86_64) glibc2.5
Setting Client Computer Group

Please enter one Client Computer Group name for this client to join.

Client Computer Group Name: **_DI Computer Group**

Performing Post-Install Tasks ...
Deciding If to Configure Subclient Policy ... no
Setting Storage Policy ...
Creating firewall CVFWD services ... done.
Successfully installed CVGxBase.
Installing Module CVGxDC 10(BUILD116)
Stopping Calypso services for Instance001 ...
Performing Pre-Install Tasks ...
Successfully copied and verified 10 files from updates and packages.
Performing Post-Install Tasks ...
Updating registry ... done.
Successfully installed CVGxDC
Installing Module CVGxFSF 10(BUILD116)
Stopping Calypso services for Instance001 ...
Performing Pre-Install Tasks ...
Successfully copied and verified 8 files from updates and packages.
Performing Post-Install Tasks ...
Updating registry ... done.
Successfully installed CVGxFSF
Installing Module CVGxIDA 10(BUILD116)
Stopping Calypso services for Instance001 ...
Performing Pre-Install Tasks ...
Successfully copied and verified 100 files from updates and packages.
Performing Post-Install Tasks ...
Successfully installed CVGxIDA.

Registering to CommServe

Registering client to CommServe Install Manager ... done.

Performing Post-Setup Tasks

Creating Updates/Service Pack Registry ... done.

Adjusting modes and permissions of installed/updated files ... done.

Cleaning up /opt/calypso/Base/Temp ...

Starting Calypso services for Instance001 ...

Done ... Thank you for choosing Bull Calypso.

[LOG INFO] To review the setup, you may find the following logs useful if available:

(1) logs under /tmp/.gxsetup

(2) install.log|env and UpdateInfo.log|env under Log Directory

(3) logs under /var/log/.gxsetup/10-116-webapplis1.di.u-psud.fr-129.175.124.194-23430[-f]

L'installation du client est terminée.

Réaliser ensuite les actions de post-installation.

Voir le chapitre dédié

Installation d'un agent Unix (tous processeurs) autre que Linux

Procédure d'installation

Vérifiez que le serveur sur lequel va être installé l'agent FS Calypso ne contient pas d'adresse de loopback correspondant au nom long du serveur dans son fichier hosts.

Monter le CD de Calypso sur le serveur, positionnez-vous à l'aide d'un terminal sur l'arborescence du CD, puis lancez l'installation en tapant `./cvpkgadd`

L'exemple suivant concerne une installation sur un FreeBSD.

```
Calypso 10 (BUILD116) FreeBSD(x86_64) 8.2-p6 using 7
Welcome to Unix Installer

      Bull Edition

      CALYPSO

      10(BUILD116)

      Welcome to Bull Calypso.

For support please visit http://support.bull.com.

      This script will install Calypso backup system on this machine.
      Log messages will be sent to /tmp/.gxsetup/int_cvpkgadd.log.88974.
      Press <ENTER> to start ...
```

Choisissez *Install data protection agents on this computer* en tapant `1` puis faites entrée


```
Calypso 10 (BUILD116) FreeBSD(x86_64) 8.2-p6 using ?
Selecting Unix Setup Task

Please select a setup task you want to perform from the list below:

Advanced options provide extra setup features such as creating custom package,
recording/replaying user selections and installing External Data Connector
software.

  1) Install data protection agents on this computer
  2) Advanced options
  3) Exit this menu

Your Choice: [1] █
```

Cochez les modules à installer. Ici, cochez *File System* pour installer un agent pour la sauvegarde des fichiers.

Pour cela tapez *1* puis faites *Entrée*. Puis tapez *d* puis faites *Entrée*.

```
Calypso 10 (BUILD116) FreeBSD(x86_64) 8.2-p6 using ?
Selecting Modules to Install

Instance001 Release 10(BUILD116)
CommClient: node=webtv1 hostname=webtv1.di.u-psud.fr

[ ] 1) File System [1101] [CUG×IDA]
[ ] 2) MySQL iDataAgent [1208] [CUG×MySQL]
[ ] 3) Resource Pack [1130] [CUG×RP]

[a=all n=none r=reverse q=quit d=done >=next <=previous ?=help]
Enter number(s)/one of "a,n,r,q,d,>,<," here: █
```

Tapez *no* pour l'installation de l'agent Restore Only.

```
Calypso 10 (BUILD116) FreeBSD(x86_64) 8.2-p6 using 7
Deciding If to Install Agents for Restore Only
Do you want to install the agents for restore only without consuming licenses?
Install Agents for Restore Only? [no] █
```

Choisir le répertoire d'installation, puis faites *Entrée*.

```
Calypso      <- request ->      CUGxBase0 for FreeBSD(x86_64) 8.2-p6 using 7
Preparing Installation Directory

Please specify where you want us to install Calypso binaries.

It must be a local directory or NFS share and there should be at least 203MB
of free space available. All files will be installed in a "calypso"
subdirectory, so if you enter "/opt", the files will actually be placed into
"/opt/calypso".

Installation Directory: [/opt] /u01
```

Choisir le répertoire des logs, puis faites *Entrée*.

```
Calypso      <- request ->      CUGxBase0 for FreeBSD(x86_64) 8.2-p6 using 7
Preparing Log Directory

Please specify where you want to keep Calypso log files.

It must be a local directory or NFS share and there should be at least 100MB
of free space available. All log files will be created in a
"calypso/Log_Files" subdirectory, so if you enter "/var/log", the logs will
actually be placed into "/var/log/calypso/Log_Files".

Log Directory: [/var/log]
```

Il est possible de spécifier un groupe d'utilisateurs UNIX pour le processus Calypso. Dans la plupart des cas, tapez *no* puis faites *Entrée*.

```

Calypso      <- request ->      CUGxBase0 for FreeBSD(x86_64) 8.2-p6 using ?
Deciding If to Use a Unix Group

Most of Calypso processes run with root privileges, but some are launched by
databases and inherit database access rights. To make sure that registry and
log files can be written to by both kinds of processes we can either make such
files world-writable or we can grant write access only to processes belonging
to a particular group, e.g. a "calypso" or a "dba" group.

We highly recommend now that you create a new user group and enter its name in
the next setup screen. If you choose not to assign a dedicated group to
Calypso processes, you will need to specify the access permissions later.

If you're planning to backup Oracle DB you should use "dba" group.

Would you like to assign a specific group to Calypso? [yes] no

```

En fonction du groupe assigné sur l'écran précédent, affectez des permissions en cochant les cases correspondantes puis tapez *d* puis faites *Entrée*.

```

Calypso      <- request ->      CUGxBase0 for FreeBSD(x86_64) 8.2-p6 using ?
Setting Access Permissions for Group and Other Users

Installer will assign full access rights to root user for all installed
Calypso files and its processes.

For group and any other users, you can specify the access permissions now.

If you did not assign a dedicated group in previous step, make sure you
specify sufficient access rights here if you are also planning to install
Calypso agents involving third party software protection.

[X] 1) Allow read permission to group users
[X] 2) Allow write permission to group users
[X] 3) Allow execute permission to group users
[X] 4) Allow read permission to other users
[X] 5) Allow write permission to other users
[X] 6) Allow execute permission to other users

[a=all n=none r=reverse   q=quit d=done   >=next <=previous   ?=help]
Enter number(s)/one of "a,n,r,q,d,>,<," here: d

```

Tapez le nombre de flux lors de la sauvegarde. (10 est une bonne valeur)

```
Calypso      <- request ->          CUGxBase0 for FreeBSD(x86_64) 8.2-p6 using 7
Setting Number of Streams

IMPORTANT : Please read install document "Configure Kernel Parameters -
Unix/Macintosh" from "Books Online" before you start configuring kernel
parameters.
Please enter the total number of streams that you plan to run at the same
time. We need to make sure that you have enough semaphores and shared memory
segments configured in /etc/system.

Number of streams [10] █
```

Certains changements dans les fichiers de conf peuvent être demandés. Ils seront à faire à la fin de l'installation. Tapez no si l'ordinateur ne peut être rebooté.

```
Calypso      <- request ->          CUGxBase0 for FreeBSD(x86_64) 8.2-p6 using 7
Deciding If to Modify System Configuration File

We now need to modify the /etc/sysctl.conf and /boot/loader.conf configuration
file on this computer. It is done to make sure that there will be enough
shared memory and semaphores available for Calypso programs.

Please review the changes below, and answer "yes", if you want us to apply
them to /etc/sysctl.conf and /boot/loader.conf file. Otherwise the
installation will proceed, the changes will saved to some other file, and you
will have to apply them manually.

***IMPORTANT*** PLEASE APPLY THE CHANGE AND REBOOT IMMEDIATE AFTER INSTALL.
kern.ipc.shmmax=2147479552 (was:33554432)
kern.ipc.shmall=524287 (was:8192)
kern.ipc.shmmin=1 (unchanged)
kern.ipc.shmmni=832 (was:192)
kern.ipc.shmseg=768 (was:128)
kern.ipc.semms=700 (was:60)
kern.ipc.semni=650 (was:10)
kern.ipc.semmsl=700 (was:60)

Do you want us to apply these changes now? [no] no █
```

Vous pouvez spécifier quels ports à utiliser lors de la communication avec le commserve. Dans la plupart des cas, laissez les ports par défaut (8400 et 8402).

```
Calypso 10 (BUILD116) CUGxBase for FreeBSD(x86_64) 8.2-p6 using ?
Setting Instance Port Number of EvMgrC

Every instance of Calypso should use a unique set of network ports to avoid
interfering with other instances running on the same machine.
The port numbers selected must be from the reserved port number range and have
not been registered by another application on this machine.

Please enter the port numbers.

Port Number for CUD : 8400

Port Number for EvMgrC: [8402] █
```

Paramètres Pare-feu : tapez *yes* puis faites *Entrée*. Cela va permettre de spécifier les ports spécifiques (et non aléatoires) pour la sauvegarde et restauration du serveur.

```
Calypso 10 (BUILD116) CUGxBase for FreeBSD(x86_64) 8.2-p6 using ?
Deciding If to Configure Firewall

You need to configure firwall settings if there is a firewall between this
client and the CommServe.

Is there a firewall between this client and the CommServe? [no] yes█
```

Tapez 1 puis faites *Entrée*.

```
Calypso 10 (BUILD116) CUGxBase for FreeBSD(x86_64) 8.2-p6 using 7
Selecting Firewall Type

Please specify now how your firewall is limiting network traffic. Whether it's
possible to open connection from here to a CommServe's tunnel port, whether
all connections toward CommServe are blocked, and we should instead expect
CommServe to connect back to us, or whether there is a proxy in between.

  1) This machine can open connection to CommServe on a tunnel port
  2) CommServe can open connections toward us
  3) Commserve is reachable only through a proxy

Your Choice: [1] 1
```

Vérifiez le nom du serveur (nom affiché dans la console Calypso)

Faites *Entrée*.

```
Calypso 10 (BUILD116) CUGxBase for FreeBSD(x86_64) 8.2-p6 using 7
Setting CommServe Client Name

Please specify client name of the CommServe below.

CommServe Client Name: backup1
```

Vérifiez le nom long du serveur (nom permettant la connexion avec le commserve)
Faites *Entrée*.

```
Calypto 10 (BUILD116) CUGxBase for FreeBSD(x86_64) 8.2-p6 using 7
Setting CommServe Host Name

Optionally, you may specify hostname of the CommServe below. Make sure the
hostname is fully qualified, resolvable by the name services configured on
this machine. If there is a port-forwarding Gateway in front of the CommServe,
enter hostname or IP address of the Gateway here.

CommServe Host Name: backup1.save.u-psud.fr
```

Spécifiez le port utilisé comme tunnel en remplacement des ports aléatoires.
Ici, 8403 est utilisé, faites *Entrée*

```
Calypto 10 (BUILD116) CUGxBase for FreeBSD(x86_64) 8.2-p6 using 7
Setting Port to Open Tunnel to CommServe

Please specify the port number, on which we should open tunnel connections
toward the CommServe. This is the same as "Tunnel HTTP/HTTPS port"
configurable in the "Incoming Ports" tab of the CommServe Firewall Properties
adjusted for a possible port-mapping Gateway in front of it.

CommServe HTTP/HTTPS tunnel port number: [8403]
```


Répondre *no*, puis faites *Entrée*.

```
Calypso      10 (BUILD116)      CUGxBase for FreeBSD(x86_64) 8.2-p6 using ?
Deciding If to Configure HTTP Proxy

Please specify if there is an HTTP proxy between this client and the
CommServe(e.g. Squid or Apache).

Is there an HTTP proxy between this client and the CommServe? [no] no
```

S'il y a une authentification par certificat pour les clients, suivez les instructions à l'écran, sinon répondez *no*, puis faites *Entrée*.

```
Calypso      10 (BUILD116)      CUGxBase for FreeBSD(x86_64) 8.2-p6 using ?
Specifying If CommServe Per-Client Certificate is Enabled

If you have checked "Force per-client certificate authentication on CommServe"
on the CommServe or Proxy, you need to provide installer with a Temp
Certificate.

This Temp Certificate can be obtained by opening "Certificate Administration
Applet" from the Java GUI's Control Panel, clicking "Temp Certificate" button,
selecting newly created client in the popped up window and copying/pasting
generated certificate to a local file accessible from this installer.

Have you enforced per-client certificate authentication on CommServe? [no] no
```

Vous pouvez affecter directement ici la politique des filtres globaux définis sur le commserve sur l'agent, en tapant **1** puis faites *Entrée*.

```
Calypso <- request -> CUGxBase for FreeBSD(x86_64) 8.2-p6 using 7
Selecting How to Set Commcell Level Global Filters

Commcell Level Global Filters are set through Calypso GUI's Control Panel in
order to filter out certain directories or files from backup Commcell-widely.
If you turn on the Global filters, they will be effective to the default
subclient. There are three options you can choose to set the filters. Please
select how to set the Global Filters for the default subclient?

    1) Use Cell level policy
    2) Always use Global filters
    3) Do not use Global filters

Your Choice: [1] 1
```

Vous pouvez affecter le sous client Default à une Stratégie de stockage déjà créée dans le commserve.

```
Calypso <- request -> CVGxBase for Linux(x86_64) glibc2.5
Selecting Client Computer Groups

Client Group(s) is currently configured on CommServe backup1.save.u-psud.fr.
Please choose the group(s) that you want to add this client
webapplis1.di.u-psud.fr to.

[ ] 1) _DI Computer Group
[ ] 2) _Polytech Computer Group
[ ] 3) _Test Computer Group

[a=all n=none r=reverse q=quit d=done >=next <=previous ?=help]
Enter number(s)/one of "a,n,r,q,d,>,<," here: █
```

Vous pouvez sélectionner le groupe de machine qui correspond à votre Service/Labo puis faire d. La liste précisée dans la copie d'écran ci-dessus est partielle et s'enrichira avec le temps.

```
Calypso      10 (BUILD116)      CUGxBase for FreeBSD(x86_64) 8.2-p6 using ?
Deciding If to Configure Storage Policy

Would you like to configure Storage Policy on this client?
Configure? [no] no
```

Fin de l'installation

Réaliser ensuite les actions de post-installation.

Voir le chapitre dédié

Actions post-installation du client

A la suite de l'installation du client, vous devez :

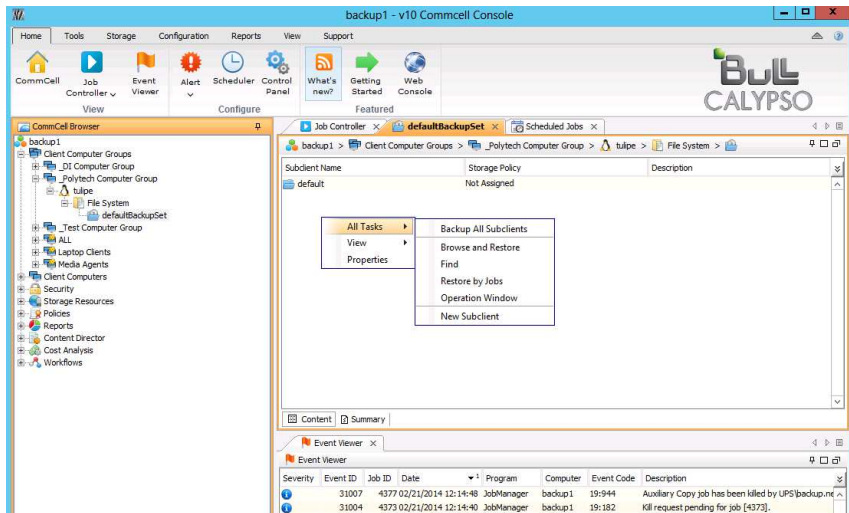
Se connecter sur la console Calypso : <http://backup1.save.u-psud.fr:81>

Utilisez votre utilisateur : [UPS\votrenomcourt](#) et votre mot de passe habituel adonis.

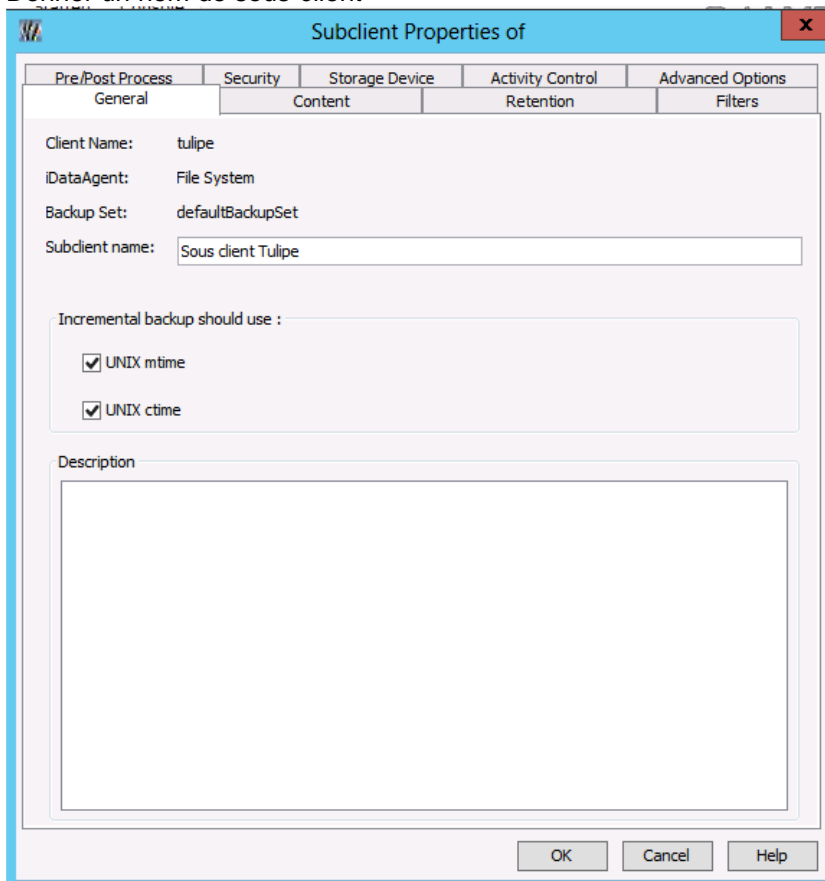
Votrenomcourt est défini dans Adonis lorsque vous êtes connectés sous votre profil, dans « Mon compte » sous le champ « identifiants » vous trouvez deux informations concernant votre compte :

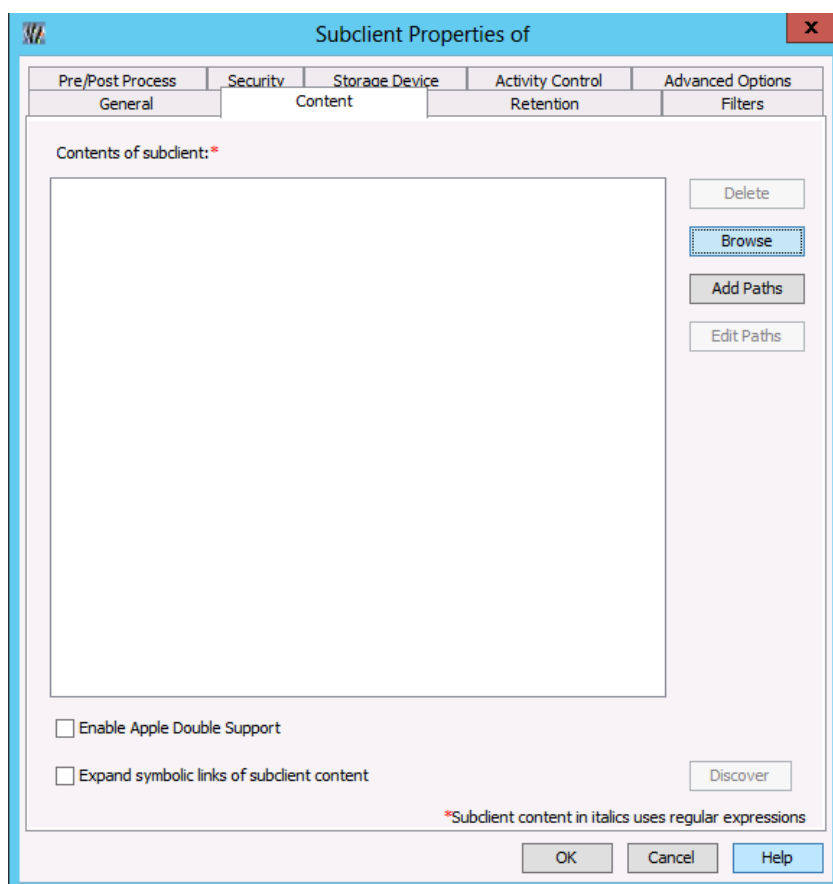
- Votre nom d'utilisateur dans sa forme longue (en general prénom.nom)
- Votre nom d'utilisateur dans sa forme courte (en général initiale du prénom et 6 premiers caractères de votre nom)

Créer un sous-client pour le client

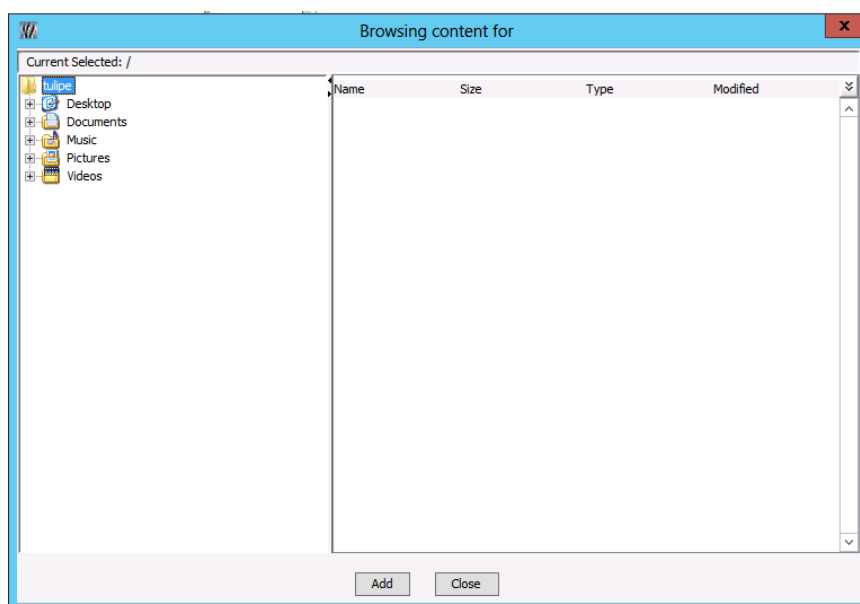


Donner un nom de sous-client

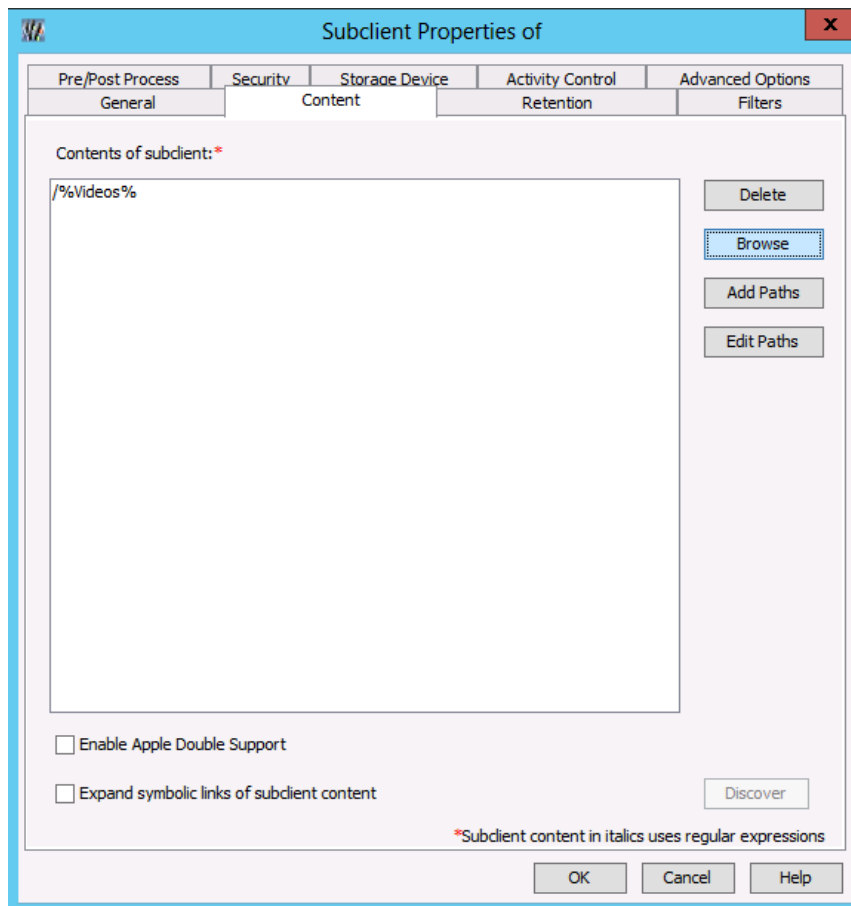




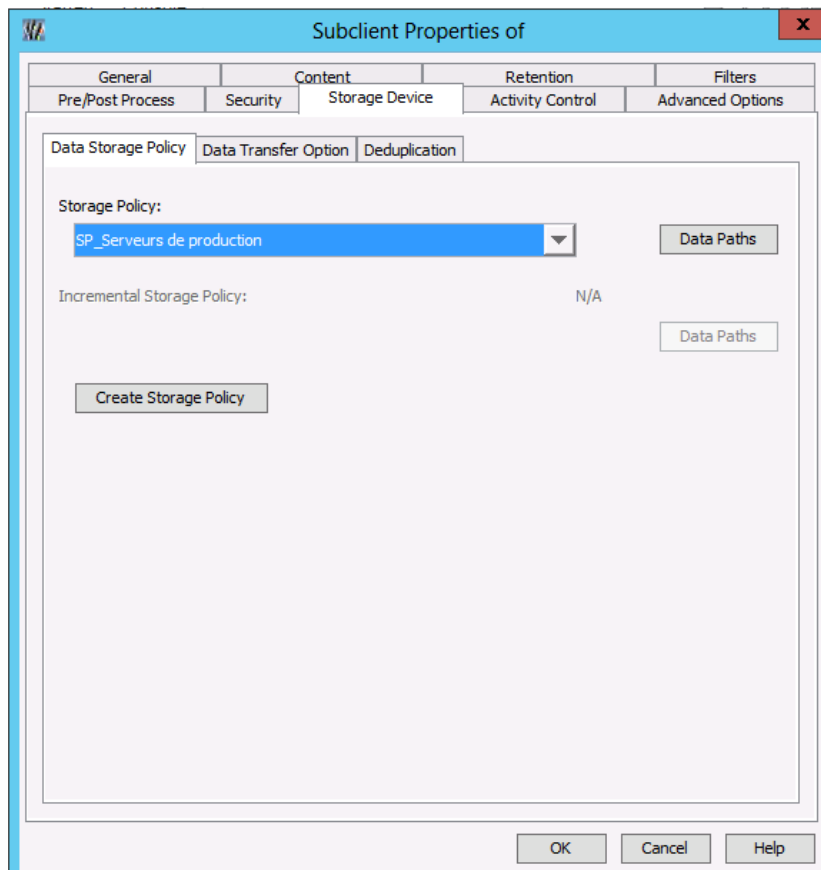
Définir les répertoires et fichiers à sauvegarder, cliquez sur « Browse »



Sélectionner les répertoires et fichiers à sauvegarder, puis cliquez sur « Add ». Terminez avec « Close »



Sélectionner une politique de stockage.



Démarrage/Arrêt des services Calypso (Linux/Unix)

Démarrer les services

```
/etc/init.d/Galaxy start  
ou  
Calypso start
```

Arrêter mes services

```
/etc/init.d/service Galaxy stop  
ou  
Calypso stop
```

Vérifier le status

Calypso status

Lister les services Calypso

Calypso list

Dé-installer Calypso

Les commandes suivantes présupposent que vous avez choisi d'installer le logiciel dans /opt

Avec les outils Calypso

```
cd /opt/calypso/  
./cvpkgrm
```

A la main

```
service Galaxy stop
```

```
rm -Rf /opt/calypso  
rm -Rf /var/log/calypso  
rm -Rf /etc/CommVaultRegistry/  
rm -f /etc/init.d/Galaxy
```